

# Installation Guide

## ZKBio Access IVS

Date: March 2020

Doc Version: 2.0

Software Version: 2.0.0

English

Thank you for choosing our product. Please read the instructions carefully before operation. Follow these instructions to ensure that the product is functioning properly. The images shown in this manual are for illustrative purposes only.



For further details, please visit our Company's website  
[www.zkteco.com](http://www.zkteco.com).

Copyright © 2020 ZKTECO CO., LTD. All rights reserved.

Without the prior written consent of ZKTeco, no portion of this manual can be copied or forwarded in any way or form. All parts of this manual belong to ZKTeco and its subsidiaries (hereinafter the "Company" or "ZKTeco").

## Trademark

**ZKTeco** is a registered trademark of ZKTeco. Other trademarks involved in this manual are owned by their respective owners.

## Disclaimer

This manual contains information on the operation and maintenance of the ZKTeco equipment. The copyright in all the documents, drawings, etc. in relation to the ZKTeco supplied equipment vests in and is the property of ZKTeco. The contents hereof should not be used or shared by the receiver with any third party without express written permission of ZKTeco.

The contents of this manual must be read as a whole before starting the operation and maintenance of the supplied equipment. If any of the content(s) of the manual seems unclear or incomplete, please contact ZKTeco before starting the operation and maintenance of the said equipment.

It is an essential pre-requisite for the satisfactory operation and maintenance that the operating and maintenance personnel are fully familiar with the design and that the said personnel have received thorough training in operating and maintaining the machine/unit/equipment. It is further essential for the safe operation of the machine/unit/equipment that personnel has read, understood and followed the safety instructions contained in the manual.

In case of any conflict between terms and conditions of this manual and the contract specifications, drawings, instruction sheets or any other contract-related documents, the contract conditions/documents shall prevail. The contract specific conditions/documents shall apply in priority.

ZKTeco offers no warranty, guarantee or representation regarding the completeness of any information contained in this manual or any of the amendments made thereto. ZKTeco does not extend the warranty of any kind, including, without limitation, any warranty of design, merchantability or fitness for a particular purpose.

ZKTeco does not assume responsibility for any errors or omissions in the information or documents which are referenced by or linked to this manual. The entire risk as to the results and performance obtained from using the information is assumed by the user.

ZKTeco in no event shall be liable to the user or any third party for any incidental, consequential, indirect, special, or exemplary damages, including, without limitation, loss of business, loss of profits, business

interruption, loss of business information or any pecuniary loss, arising out of, in connection with, or relating to the use of the information contained in or referenced by this manual, even if ZKTeco has, of the possibility of such damages.

This manual and the information contained therein may include technical, other inaccuracies or typographical errors. ZKTeco periodically changes the information herein which will be incorporated into new additions/amendments to the manual. ZKTeco reserves the right to add, delete, amend or modify the information contained in the manual from time to time in the form of circulars, letters, notes, etc. for better operation and safety of the machine/unit/equipment. The said additions or amendments are meant for improvement /better operations of the machine/unit/equipment and such amendments shall not give any right to claim any compensation or damages under any circumstances.

ZKTeco shall in no way be responsible (i) in case the machine/unit/equipment malfunctions due to any non-compliance of the instructions contained in this manual (ii) in case of operation of the machine/unit/equipment beyond the rate limits (iii) in case of operation of the machine and equipment in conditions different from the prescribed conditions of the manual.

The product will be updated from time to time without prior notice. The latest operation procedures and relevant documents are available on <http://www.zkteco.com>.

If there is any issue related to the product, please contact us.

## ZKTeco Headquarters

**Address**            ZKTeco Industrial Park, No. 26, 188 Industrial Road,  
Tangxia Town, Dongguan, China.

**Phone**             +86 769 - 82109991

**Fax**                 +86 755 - 89602394

For business related queries, please write to us at: [sales@zkteco.com](mailto:sales@zkteco.com).

To know more about our global branches, visit [www.zkteco.com](http://www.zkteco.com).

## About the Company

ZKTeco is one of the world's largest manufacturer of RFID and Biometric (Fingerprint, Facial, Finger-vein) readers. Product offerings include Access Control readers and panels, Near & Far-range Facial Recognition Cameras, Elevator/floor access controllers, Turnstiles, License Plate Recognition (LPR) gate controllers and Consumer products including battery-operated fingerprint and face-reader Door Locks. Our security solutions are multi-lingual and localized in over 18 different languages. At the ZKTeco state-of-the-art 700,000 square foot ISO9001-certified manufacturing facility, we control manufacturing, product design, component assembly, and logistics/shipping, all under one roof.

The founders of ZKTeco have been determined for independent research and development of biometric verification procedures and the productization of biometric verification SDK, which was initially widely applied in PC security and identity authentication fields. With the continuous enhancement of the development and plenty of market applications, the team has gradually constructed an identity authentication ecosystem and smart security ecosystem, which are based on biometric verification techniques. With years of experience in the industrialization of biometric verifications, ZKTeco was officially established in 2007 and now has been one of the globally leading enterprises in the biometric verification industry owning various patents and being selected as the National High-tech Enterprise for 6 consecutive years. Its products are protected by intellectual property rights.

## About the Manual

This manual introduces the installation of ZKBio Access IVS software.

All figures displayed are for illustration purposes only. Figures in this manual may not be exactly consistent with the actual products.






## Document Conventions

Conventions used in this manual are listed below:

### GUI Conventions

For Software	
Convention	Description
Bold font	Used to identify software interface names e.g. <b>OK, Confirm, Cancel</b>
>	Multi-level menus are separated by these brackets. For example, File > Create > Folder.
For Device	
Convention	Description
< >	Button or key names for devices. For example, press <OK>
[ ]	Window names, menu items, data table, and field names are inside square brackets. For example, pop up the [New User] window
/	Multi-level menus are separated by forwarding slashes. For example, [File/Create/Folder].

### Symbols

Convention	Description
	This implies about the notice or pays attention to, in the manual
	The general information which helps in performing the operations faster
	The information which is significant
	Care taken to avoid danger or mistakes
	The statement or event that warns of something or that serves as a cautionary example.

## Table of Contents

<b>1</b>	<b>INSTALLATION REQUIREMENTS .....</b>	<b>7</b>
1.1	CONFIGURATION REQUIREMENTS.....	7
1.2	OPERATING SYSTEM .....	7
<b>2</b>	<b>INSTALLATION STEPS .....</b>	<b>8</b>

# 1 Installation Requirements

## 1.1 Configuration Requirements

### ➤ Without VMS Device

**CPU:** Master frequency of 2.0GHZ or above

**RAM:** 4GB or above

**Hardware:** Available space of 10GB or above. We recommend using NTFS hard disk partition as the software installation directory

**Monitor Resolution:**1024\*768 pixels or above

### ➤ With VMS Device

**CPU:** Intel(R) Core(TM) i5 6500 @2.6GHZ or Above

**RAM:** 8GB or above

**Hardware:** Available space of 10GB or above. We recommend using NTFS hard disk partition as the software installation directory

**GPU:** NVIDIA GTX750 or Above.

**Monitor Resolution:**1024\*768 pixels or above

## 1.2 Operating System

**Supported Operating Systems:** Windows7/ Windows8/ Windows8.1/ Windows10/ Windows Server 2008/ Windows Server 2012/ Windows Server 2016/ Windows Server 2019

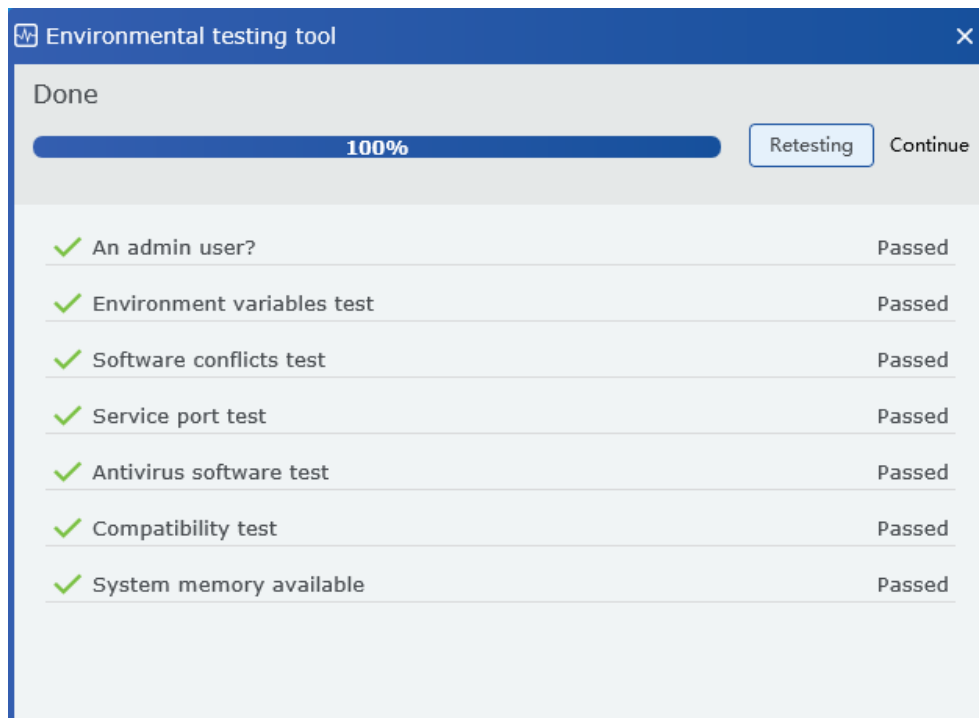
**Supported Databases:** PostgreSQL/ MS SQL Server/ Oracle

**Recommended browser version:**

Internet Explorer11+/Firefox27+/Chrome33+

## 2 Installation Steps

- (1) Right-click step.exe file in the installation package and select Run as Administrator. This is the Environmental testing tool, you can check out whether your computer conforms to the installation standards of the software.

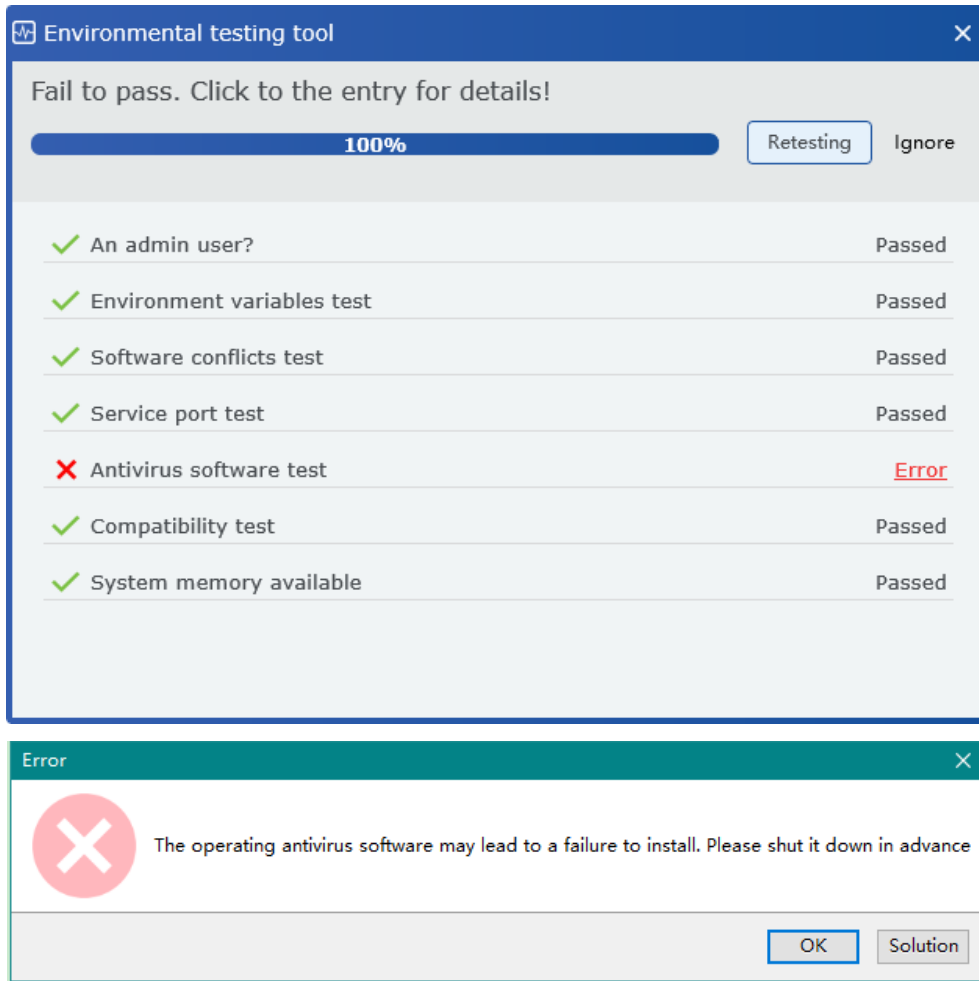


### **Notes:**

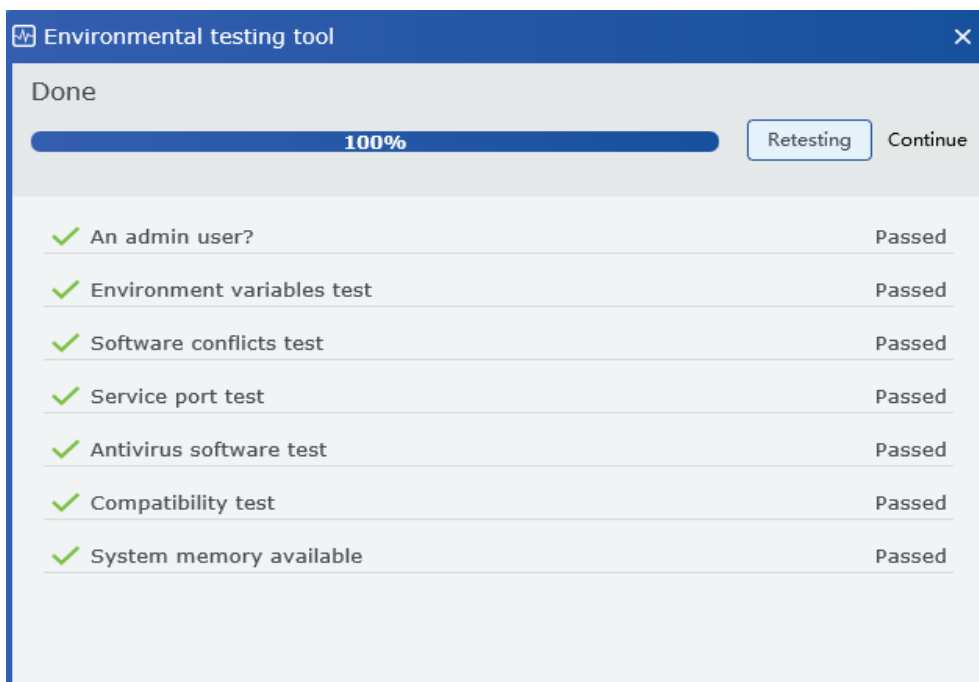
- Before installing the software, disable the anti-virus.
- If the % SystemRoot % \ system32 does not exist in the environment variable path, add the same.
- When the ports are occupied, make the ports available.

If there is any anomaly detection, the following error pops-up.

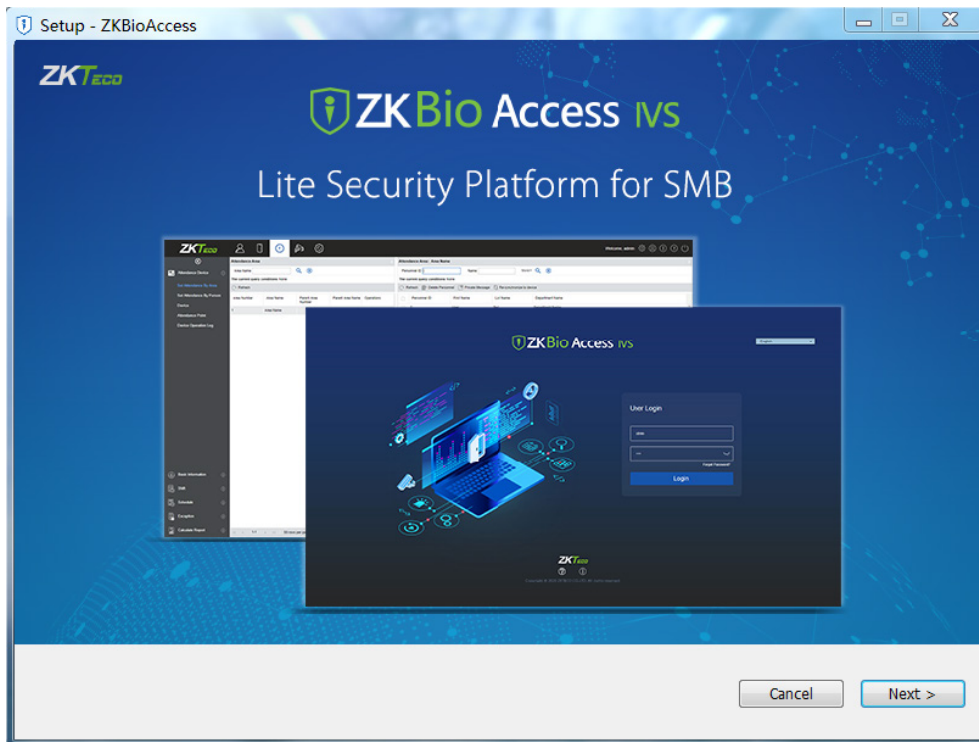




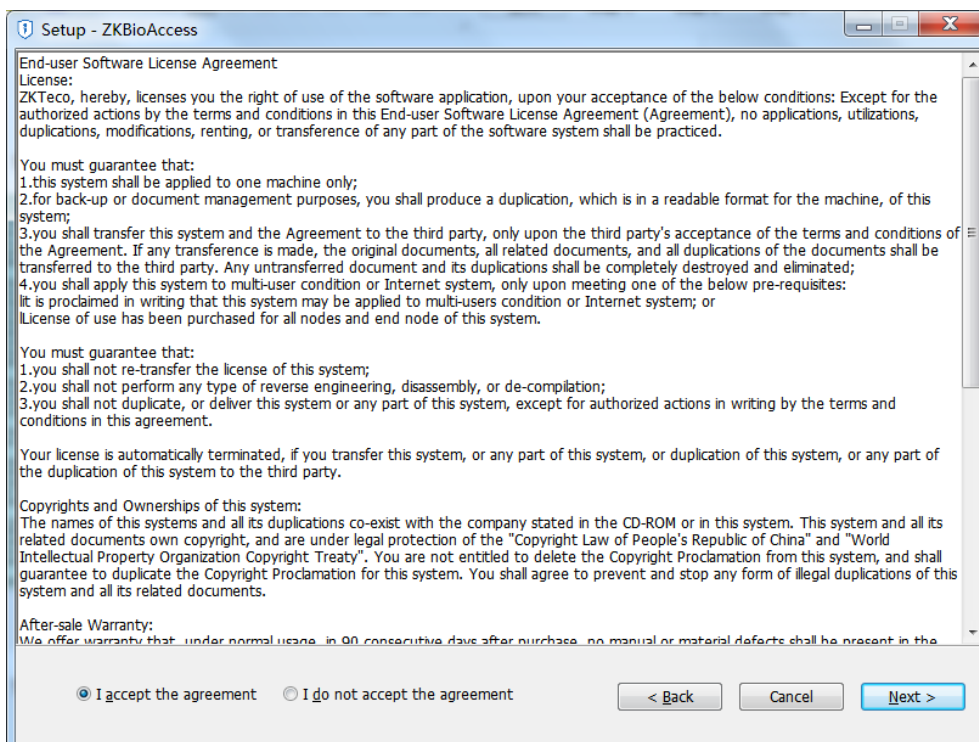
(2) If there is no anomaly detection, click [Continue].



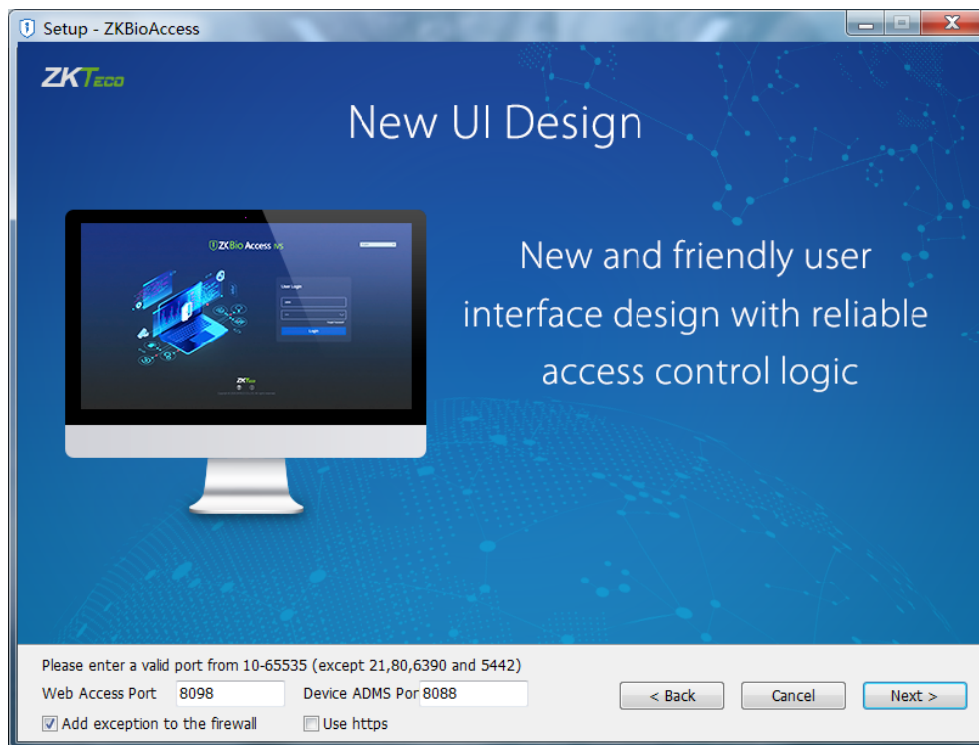
(3) Click [Next].



(4) Select the radio button to accept the agreement and click Next.



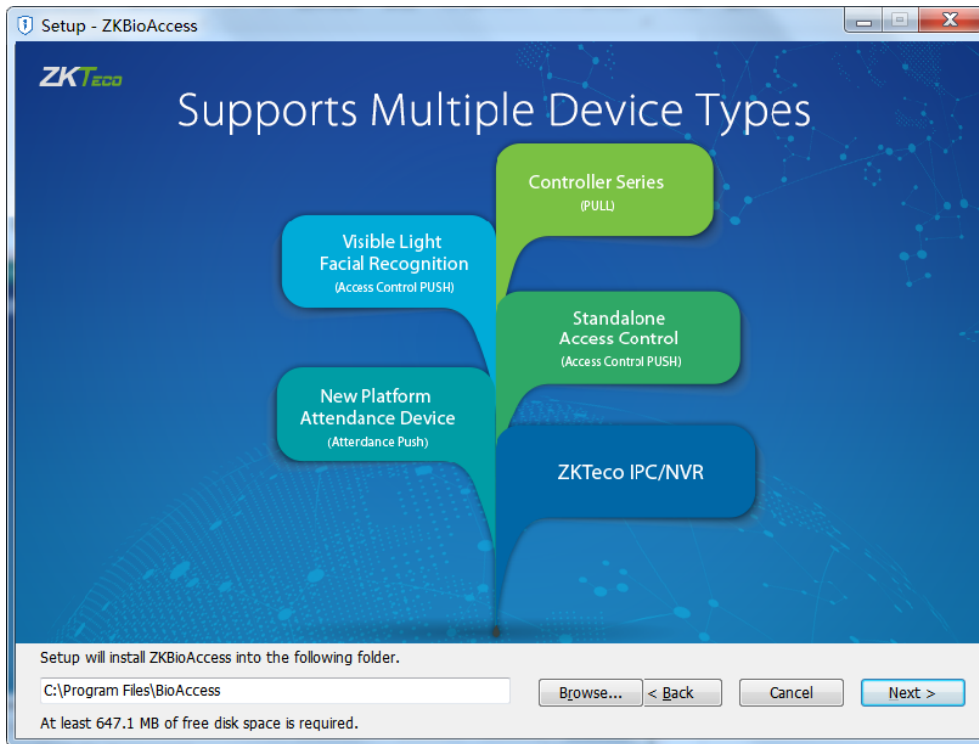
(5) Set the Access port and ADMS port number.



**Notes:**

- a. The Server Port is 8088 by default. Make sure not to use any occupied port. It can't be the same with the Database Port 5432, Redis Port 6380, Port 21 and Port 80.
- b. Add an exception in the Firewall to avoid blocking the program.
- c. The ADMS Port is used to connect the device and the Web access port which is used to access the website. You can define the port except for the port numbers 21,80,6380 and 5432.

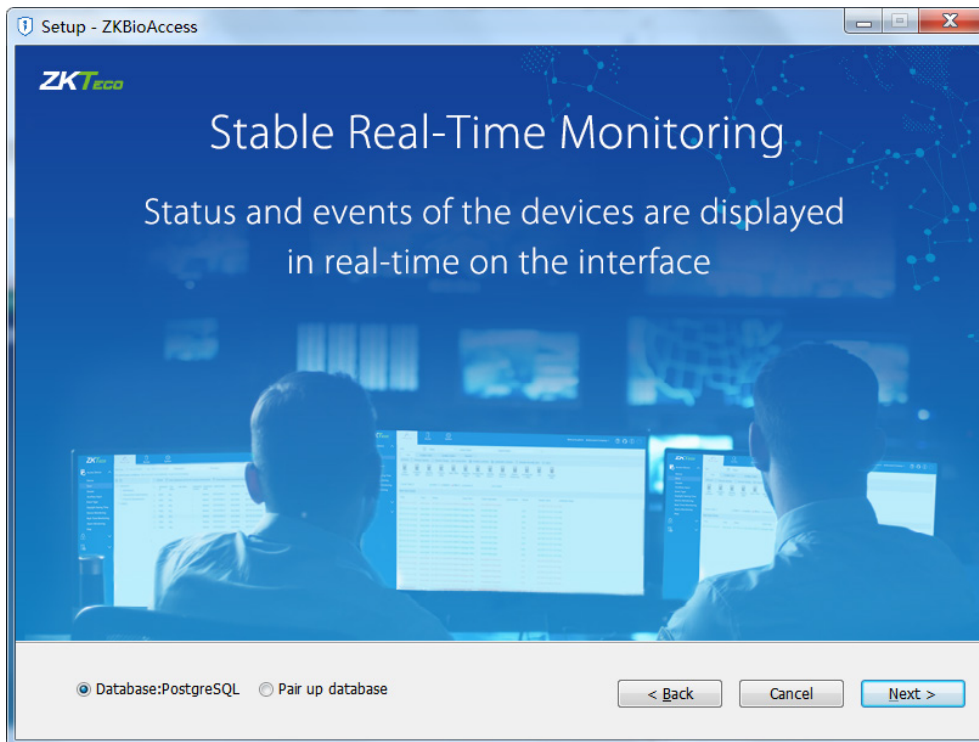
(6) Click [Next] to select the installation path.



**Notes:**

- a. You can select the installation path as you wish.
- b. The Software requires at least 500MB space. Make sure that the installation path has enough memory.

(7) Select the Database type.



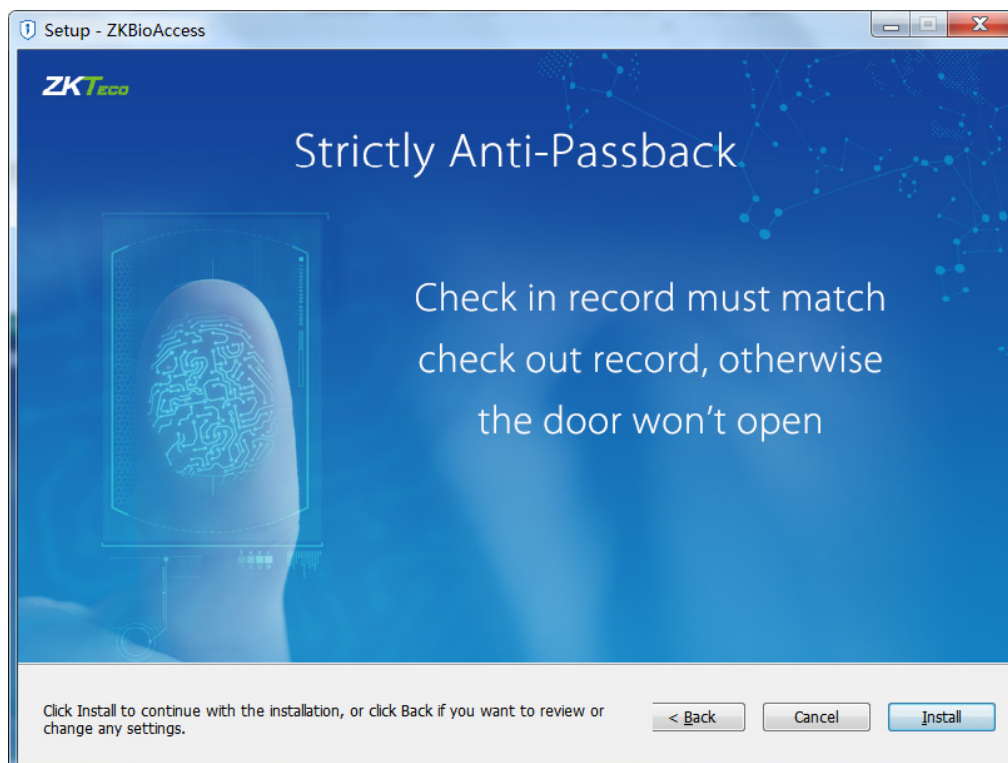
(8) Click [Next] to set the backup path.



**Notes:**

- a. Select the installation path as you wish.
- b. The Software looks for the largest available space and creates a folder named SecurityDBBack.

(9) Click [Next].

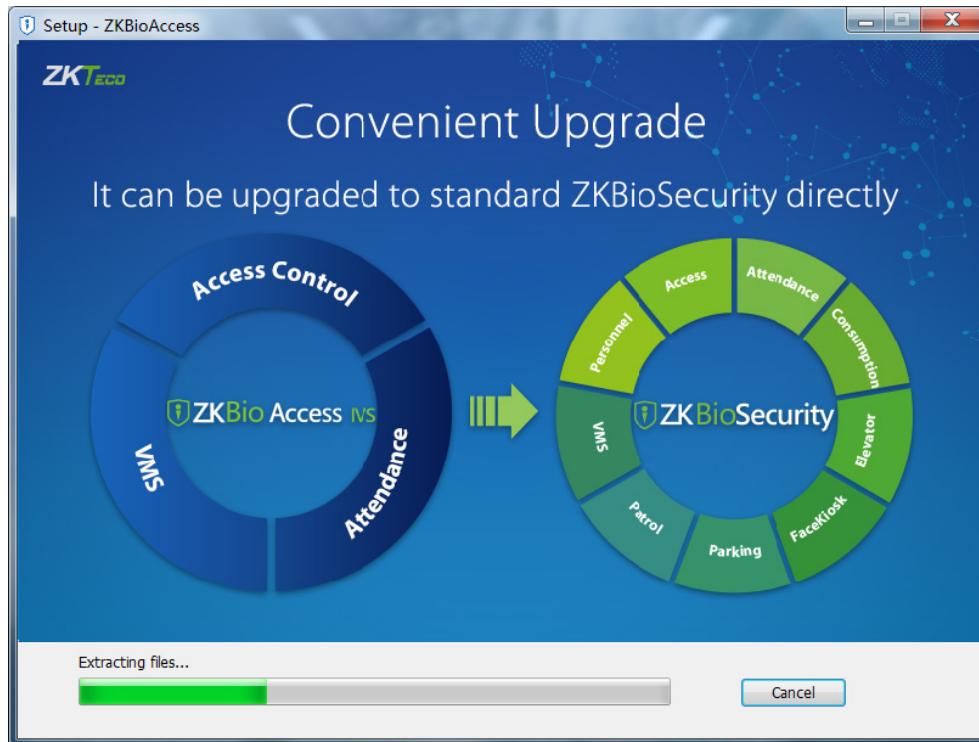




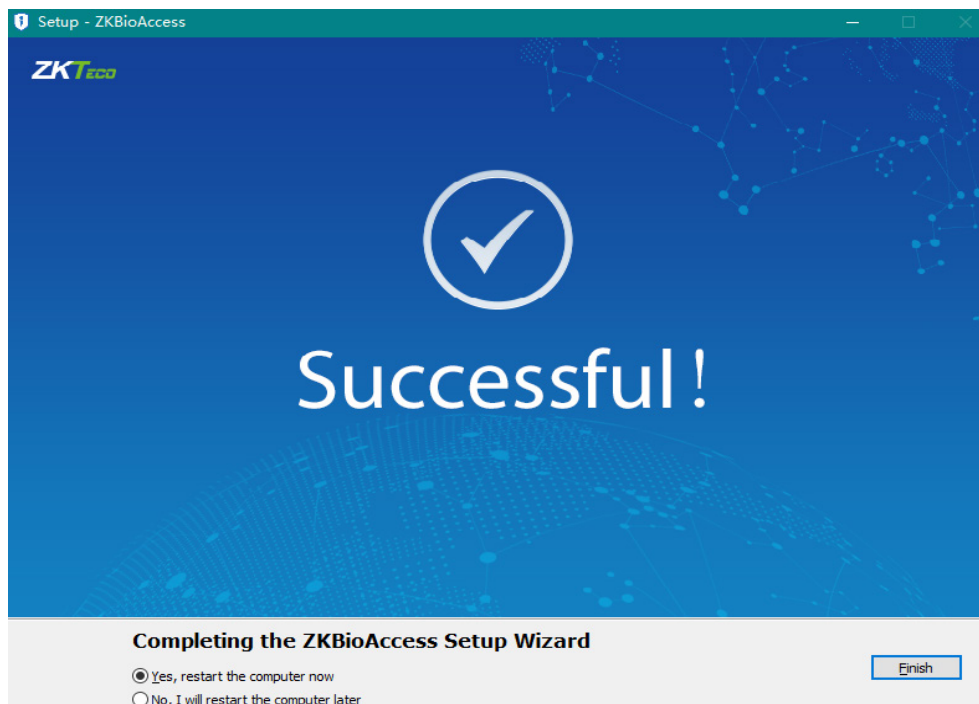
**Notes:**

Click [Cancel] to quit the installation, click [Back] to reset the settings.

(10) Click [Install] to start installing the software.



(11) After installation, click [Finish] and restart the Server to complete the installation.



ZKTeco Industrial Park, No. 26, 188 Industrial Road,

Tangxia Town, Dongguan, China.

Phone : +86 769 - 82109991

Fax : +86 755 – 89602394

[www.zkteco.com](http://www.zkteco.com)

